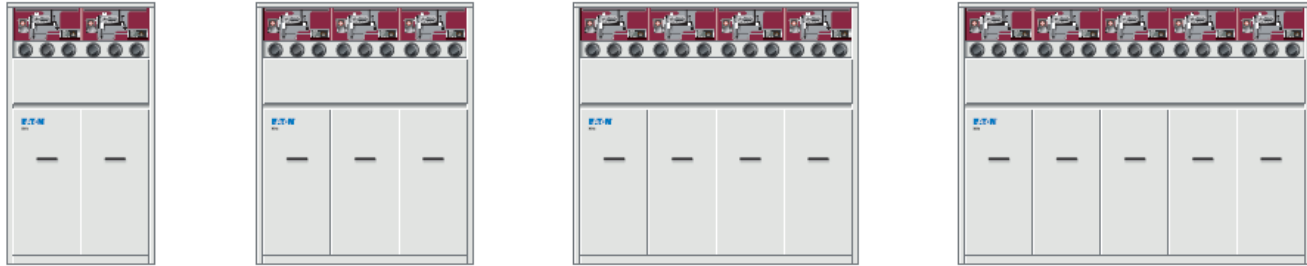


Xiria M/MA

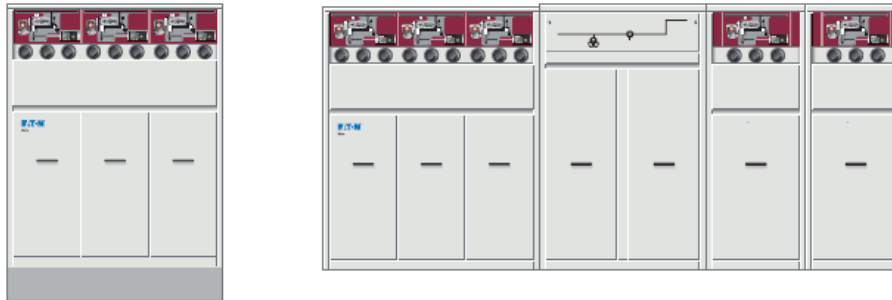


Complete Xiria family

Xiria
(Block type)



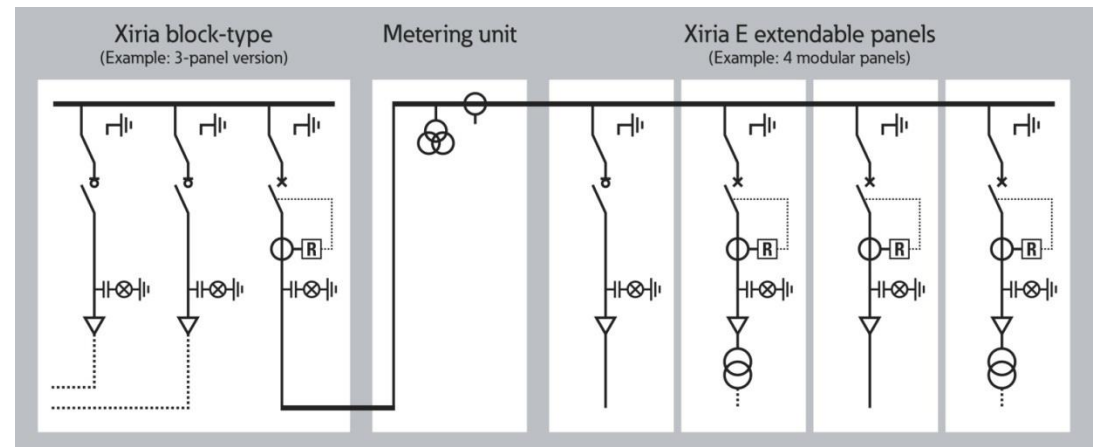
Xiria M
(Metering)



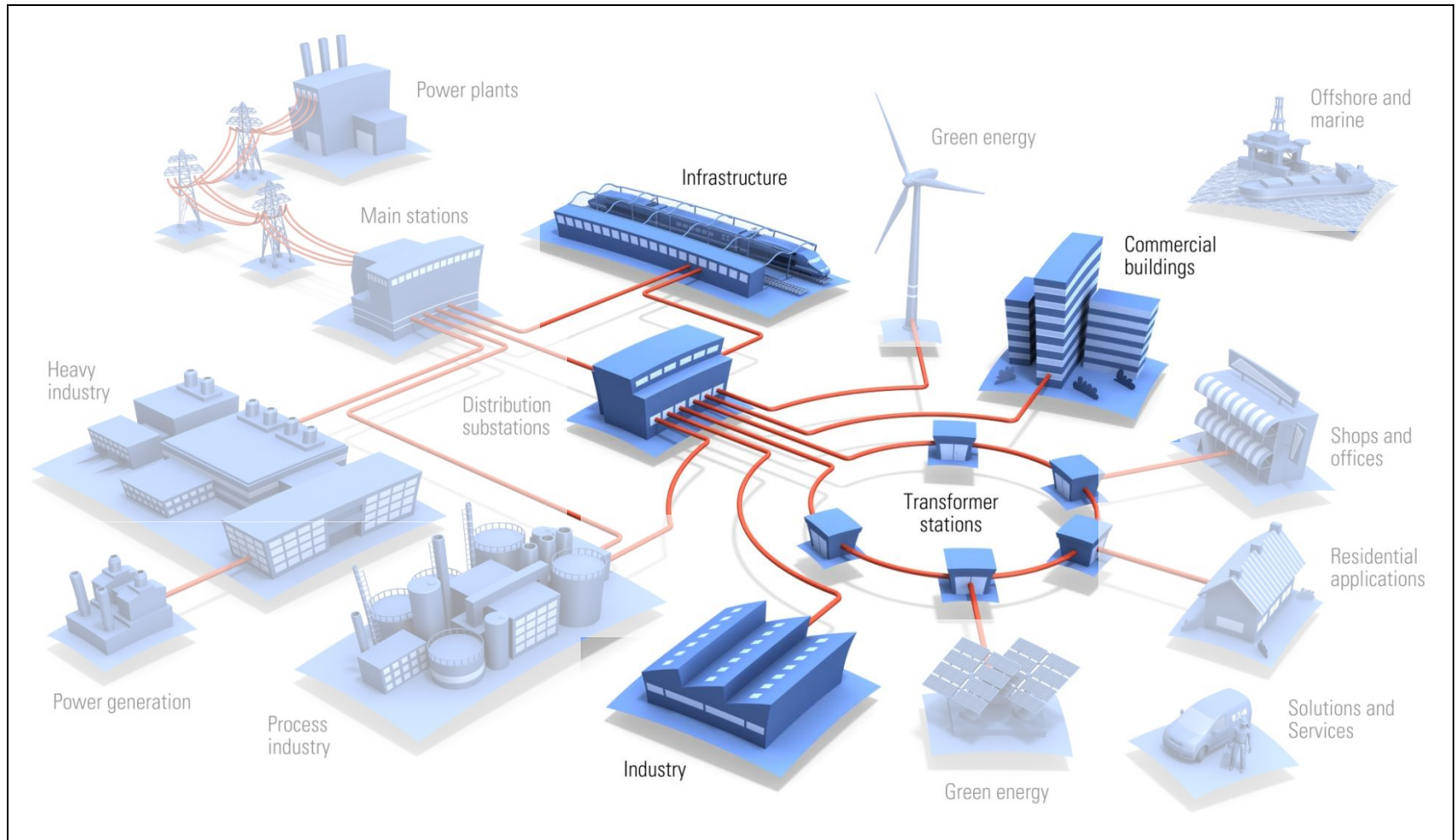
Xiria E
(Extendable)



Xiria and Xiria E in one system

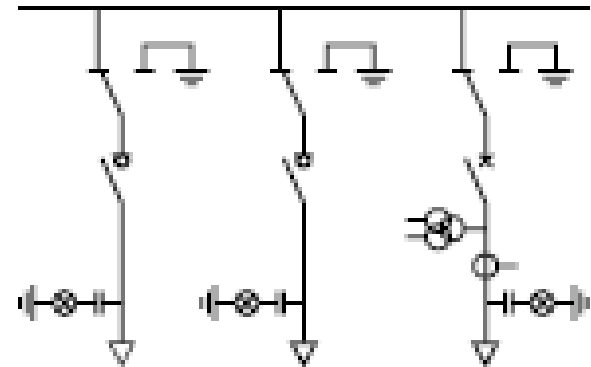
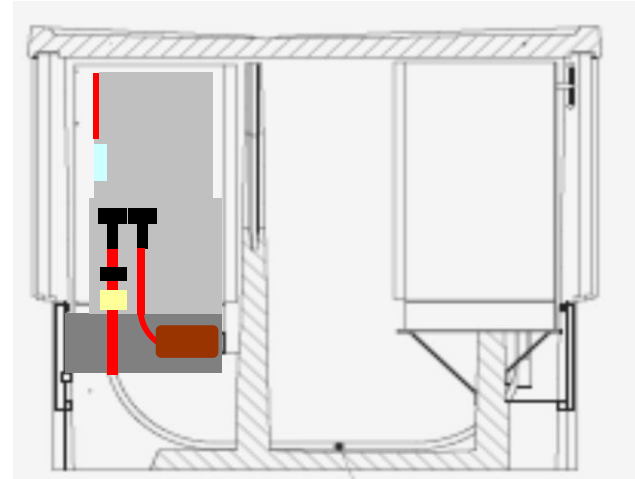


Markets & Applications



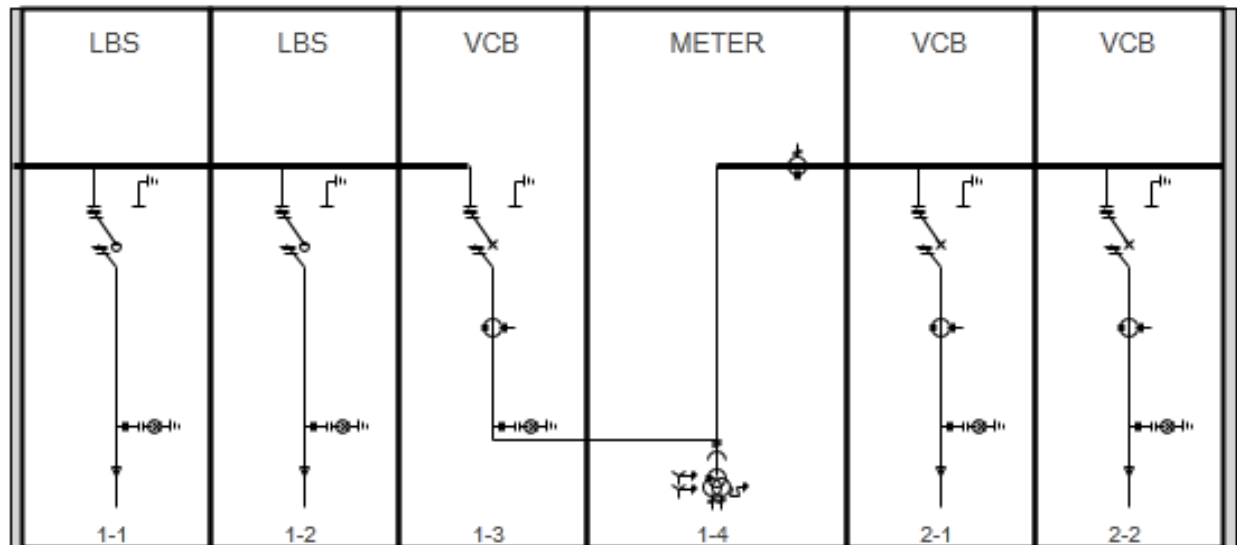
Typical application for commercial building MV consumer sub with MV metering (1)

- 12 and 24 kV tariff metering
- Fits in different stations
- Customer connection up to 5 MVA
- Screened connectors Tyco RSTI
- No cable cellar needed
- Including ferro-resonance filter
- In 3- or 4 or 5 panel unit



Typical application for commercial building MV consumer sub with MV metering (2)

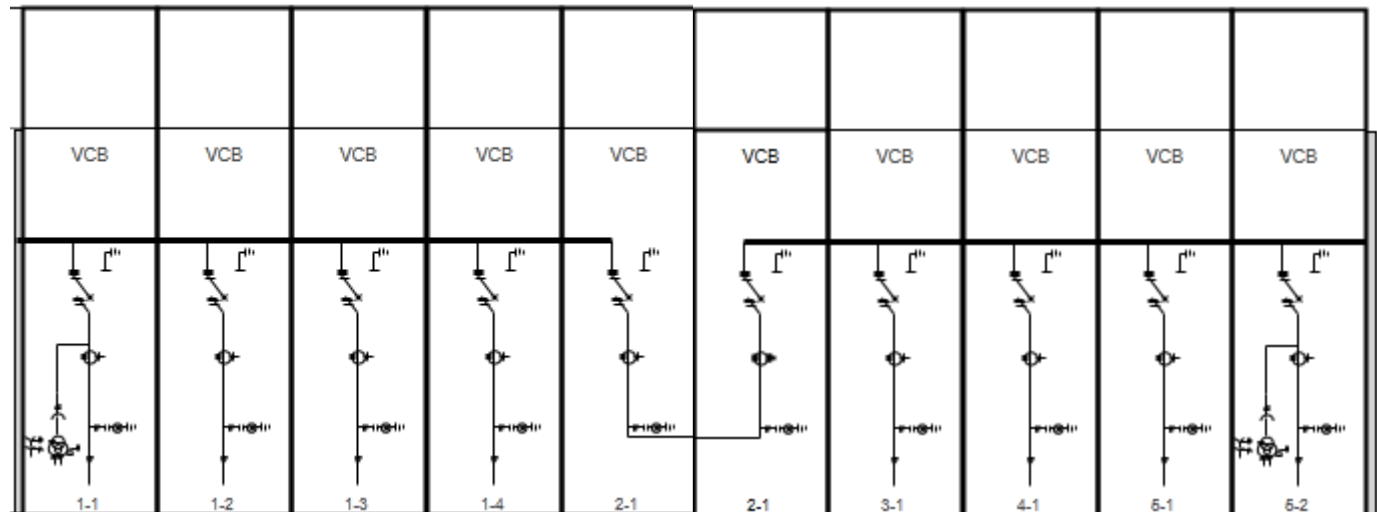
- Load-break switches for ring connection
- Circuit-breaker or Load-break switch for sectionalizer function
- Metering panel for power consumption metering
- transformer panels by means of 200A circuit-breaker
- Block or single panel construction left of metering panel



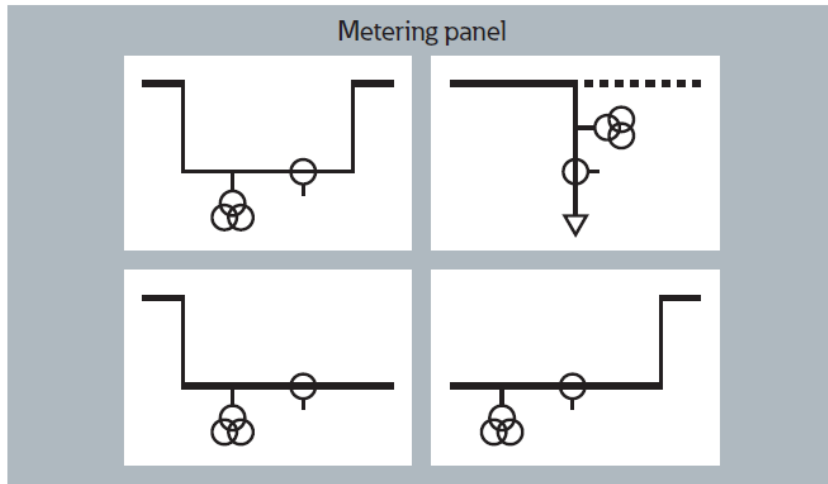
Typical application for Industry

MV consumer sub with double incoming

- Double incomer panels
- Metering on both sections
- Full modular construction
- Advanced protection and control



Product Range (8)



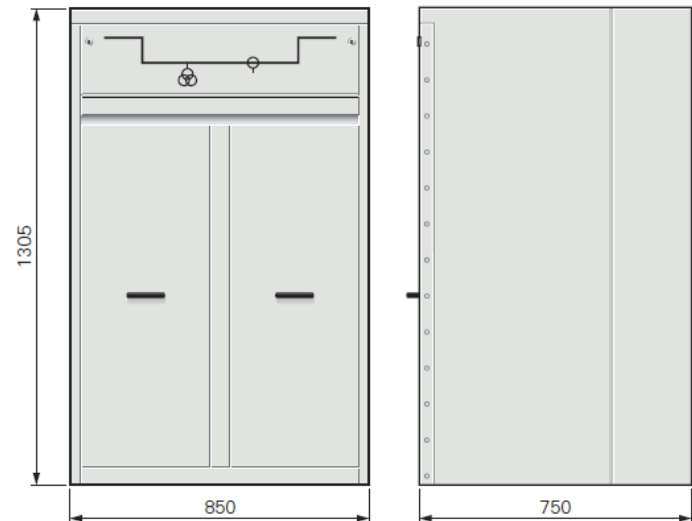
Rated voltage	24 kV
Power frequency withstand voltage	50 kV
Impulse withstand voltage	125 kV
Rated current busbars	630 A
Short-time current * optional 3 s	20 kA-1s*
Rated normal current (max.)	N.A.
Internal arc (IAC)	16 kA-1s AFL
Internal arc with chimney	Not available yet



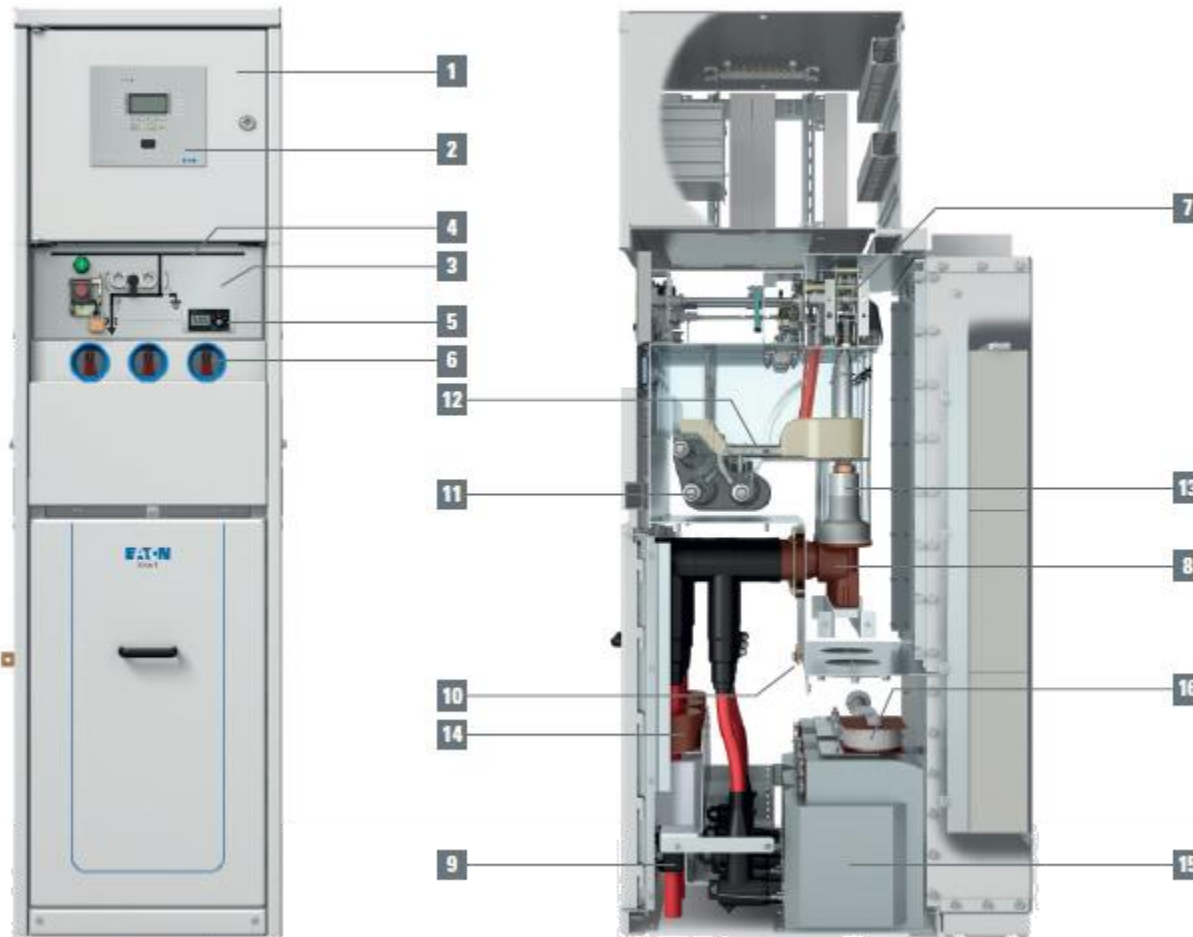
Voltage
transformer
at the cable



Current
transformer

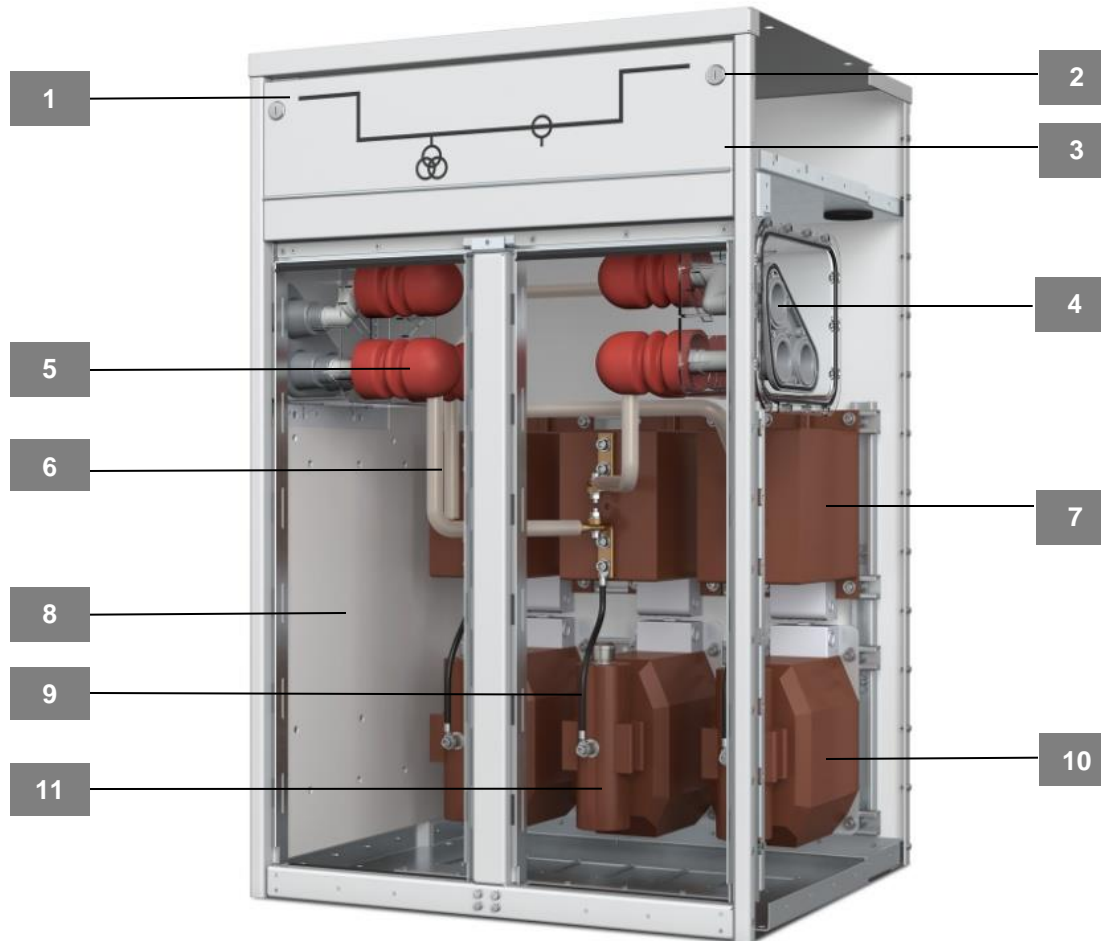


Xiria E version - Basic Design



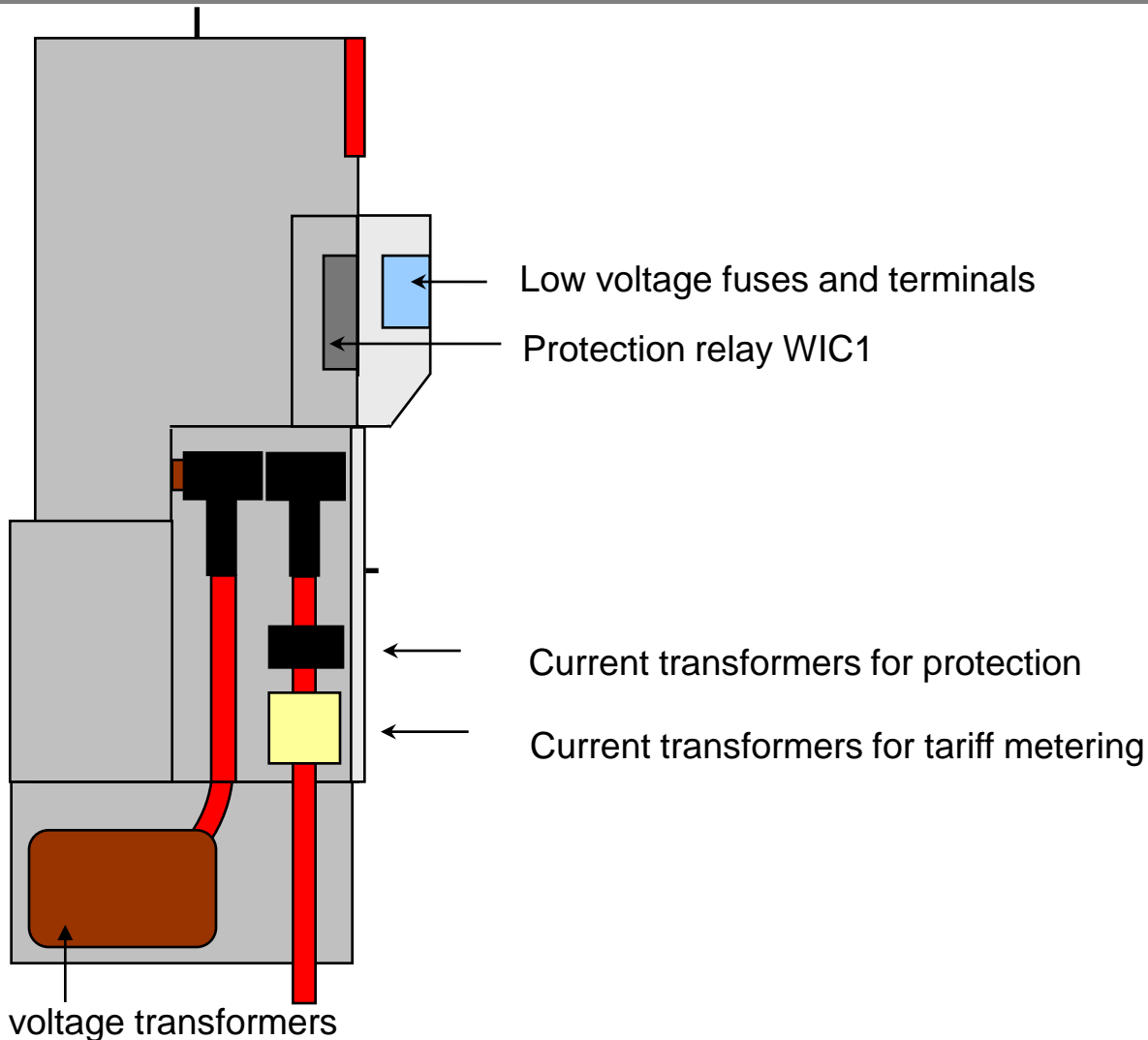
1. Low voltage compartment
2. Protection relay
3. Control panel
4. Mimic diagram
5. Voltage detection system
6. Inspection window
7. Mechanism
8. Cable cones
9. Cable clamps
10. Earth bar
11. Busbar
12. Change-over switch
13. Vacuum interrupter
14. Current transformers
15. Voltage transformers
16. Coil and resistor

Xiria Metering panel – Basic Design

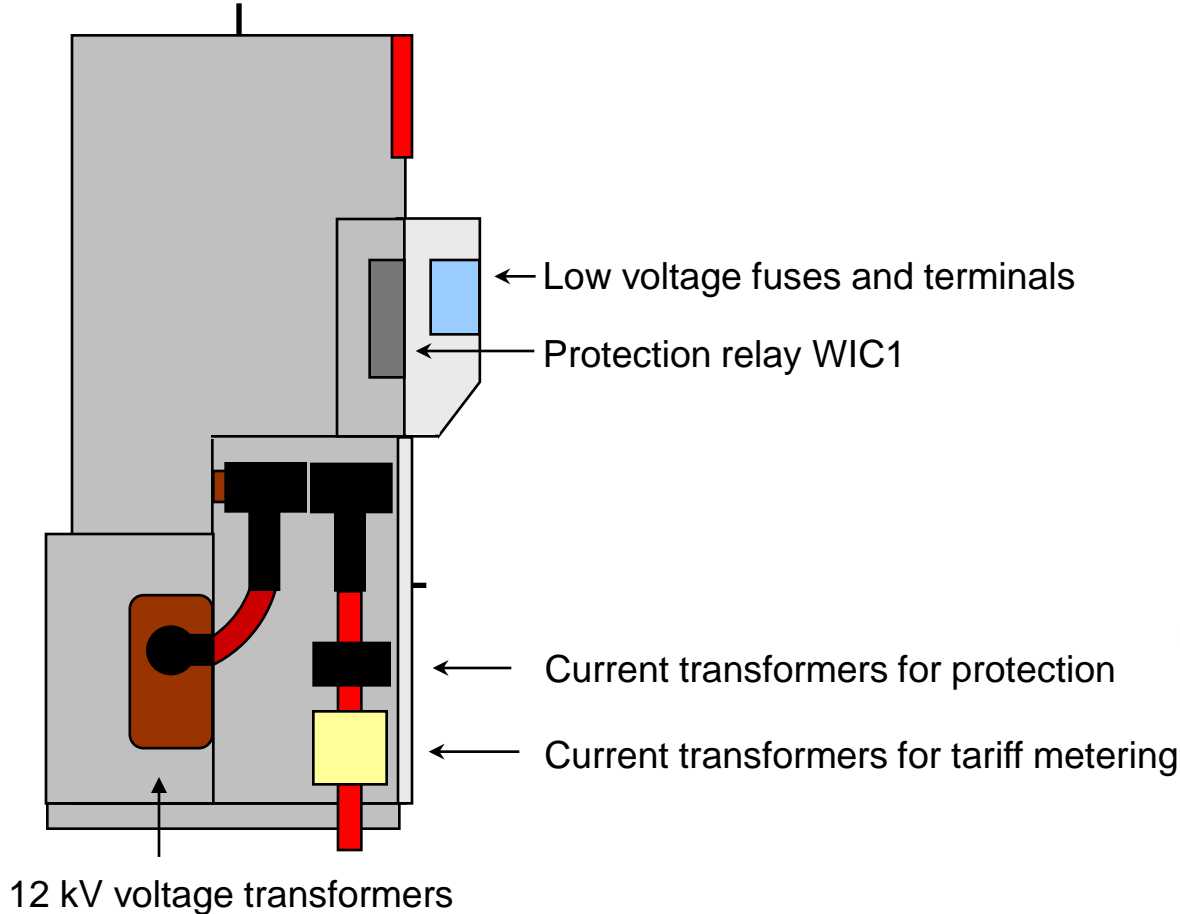


1. Mimic diagram
2. Locking
3. Low voltage compartment
4. Coupling
5. Isolation caps
6. Busbars
7. Current transformer
8. High voltage compartment
9. Flexible VT connection
10. Voltage transformer
11. HV fuse

Xiria-M Block version – Basic Design (max. 24 kV tariff metering)



Xiria-MA Block version – Basic Design (max. 12 kV tariff metering)



Current transformers – Design & location

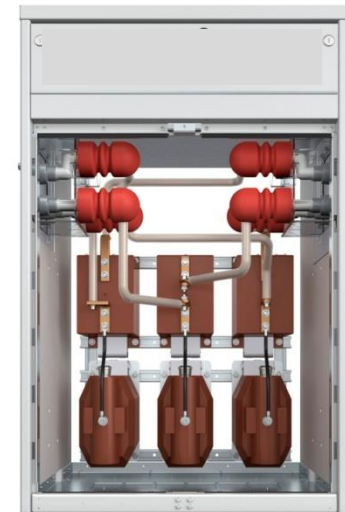
- Different types possible:
 - ✓ Ring core type for metering & protection
 - ✓ Block type in “open” metering panel
- Brand ring core type: Eaton, ELEQ
- Brand block type: Any, if dimensions according DIN 42600 narrow design
- Position of ring core type:
 - ✓ Behind cone (selected number)
 - ✓ Around cable



Behind cone



Around cable



In metering panel

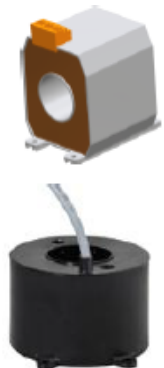
Current transformers – Ratings

Electrical data

Rated continuous thermal current		Max. 1.2 x rated current (primary)
Rated thermal short-time current, max. 3 s		Max. 20 kA
Measuring core	Rating	2.5 VA to 30 VA
	Class	0.2 to 1
	Overcurrent factor	FS 5, FS 10
Protection core	Rating	2.5 VA to 30 VA
	Class	5 P or 10 P
	Overcurrent factor	10 to 30
Insulation class		E

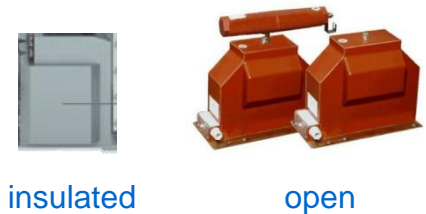
Current transformers for WIC1 and WIB1 protection relays

WE1H1	Around the primary cables	WIC1 8-28A	WIB1 8-15A
WE2H1	On cone type A	WIC1 16-56A	WIB1 16-30A
W3H1	On cone type A	WIC1 32-112A	WIB1 32-60A
W4H1	On cone type A	WIC1 64-224A	WIB1 64-120A
W5H1	On cone type A	WIC1 128-448A	WIB1 128-240A
WE2H3	On cone type C	WIC1 16-56A	WIB1 16-30A
W3H3	On cone type C	WIC1 32-112A	WIB1 32-60A
W4H3	On cone type C	WIC1 64-224A	WIB1 64-120A
W5H3	On cone type C	WIC1 128-448A	WIB1 128-240A

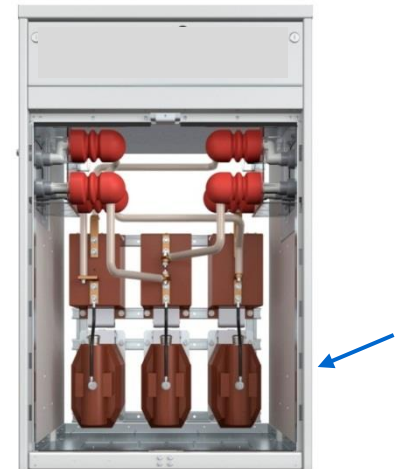


Voltage transformers – Design & location

- Different types possible:
 - ✓ Single phase insulated
 - ✓ With open connections in “open” metering panel
- Brands:
 - ✓ Sadtem for insulated type
 - ✓ With open connections; any brand if dimensions is according DIN 42600 narrow design
- Open type with option for HV fuse
- Both types have option for anti-ferroresonance kit



Insulated type
integrated in panel



In metering panel



Powering Business Worldwide